

*Minerva*

# THE WAY WE WORK

---

## ABOUT US

### **Minerva**

### **A COMPANY WITH BEST PRODUCTION NETWORK FOR BEST PRODUCTIONS**

---

Our company is always doing our best to develop new items to lead the market trend. We always want to be First Mover rather than Fast Follower. As a leading textile company in Daegu, Korea, we have very best production network and produce our own items cooperating with outsourcing factories who are the best for each item. Everytime when we develop and produce new items, we analyse all the processes and select each process factories who's the best for the item and keep improving it with item for better quality and price compatitiveness. that's why we can keep offering better quality, better price, better lead time to our customers than the factories who can't be flexible because of sticking in their own inner production line.

# A LIFE IN TEXTILE FIELDS

---

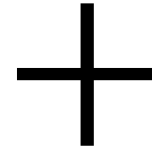
**“TEXTILE IS  
COMPOSITE ARTS”**

As you know, trends and markets are always changing. We are constantly watching how they will change and developing items to catch up those changes. In addition, we keep studying the trend of materials and any production issues in other competing country like China & Indonesia. So we can select new collection most competitive to develop for next trend.

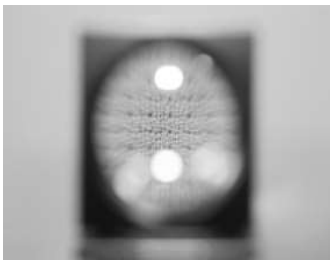


# TEXTILE DESIGN

# PRODUCTION



# QUALITY CONTROL



## TEXTILE DESIGN

Fashion trend in the market is changing very fast and it's quite hard to predict. Because fashion reflects the times. Therefore, to read fashion trend correctly, you must have a perspective view on all kind of areas like politics, society, economy, community and culture. It also moves like live creature depending on the material, structure, hand-feel and price. So we're always trying to predict correct and invest to design textile structures and best processes with our own know-how to lead the fashion trend.

## PRODUCTION

Maintaining the exact fabric quality all the time is not easy. There are many processes from weaving to final packing and if any part is something wrong, it will cause defect. All our staffs are taking much care to prevent any defect in advance by earlier communication and instructions to every processes.

## QUALITY CONTROL

Quality control is very important. Probably there's no one who doesn't know this. But if you ask what quality you want directly to factory, probably and in many cases, they will select the most productive way even the quality isn't enough. We understand the quality you want and know very well every processes, so we can instruct best way to achieve the quality you want and maintain it all the time.

# **WHAT WE CAN DO FOR YOU?**

---

**ALL KIND OF  
POLYESTER  
FABRICS  
FOR  
WOMEN'S  
WEAR**

**DRESS**

**TOP**

**SKIRT**

**TROUSER**

**JACKET**

**KNIT**

# **WHEN YOU MEETS MINERVA**



**WHEN YOU'RE  
LOOKING FOR SOMETHING**

**PLEASE**



**ANALYSIS**

**Yarn, Denier, Structure  
Width, Weight**



**SOURCING**

**We present you items that are  
the same or similar to what  
you are looking for.**

# **WE WILL SUPPORT FOR YOU**

---

## **CONTACT US**

**CALL US** : +82 53 564 0556  
**E-MAIL US** : [sales@minervatex.com](mailto:sales@minervatex.com)  
**VISIT US** : 4F, DAEIL BLDG  
439, WARYONG-RO, SEO-GU  
DAEGU, 41753, S.KOREA